

BMP15 Antibody (Center)
Purified Rabbit Polyclonal Antibody (Pab)
Catalog # AP1711c**Specification**

BMP15 Antibody (Center) - Product Information

Application	IHC-P, WB,E
Primary Accession	O95972
Other Accession	NP_005439
Reactivity	Human
Host	Rabbit
Clonality	Polyclonal
Isotype	Rabbit IgG
Antigen Region	241-271

BMP15 Antibody (Center) - Additional Information**Gene ID** 9210**Other Names**

Bone morphogenetic protein 15, BMP-15, Growth/differentiation factor 9B, GDF-9B, BMP15, GDF9B

Target/Specificity

This BMP15 antibody is generated from rabbits immunized with a KLH conjugated synthetic peptide between 241-271 amino acids from the Central region of human BMP15.

Dilution

IHC-P~~1:10~50

WB~~1:2000

E~~Use at an assay dependent concentration.

Format

Purified polyclonal antibody supplied in PBS with 0.09% (W/V) sodium azide. This antibody is prepared by Saturated Ammonium Sulfate (SAS) precipitation followed by dialysis against PBS.

Storage

Maintain refrigerated at 2-8°C for up to 2 weeks. For long term storage store at -20°C in small aliquots to prevent freeze-thaw cycles.

Precautions

BMP15 Antibody (Center) is for research use only and not for use in diagnostic or therapeutic procedures.

BMP15 Antibody (Center) - Protein Information**Name** BMP15**Synonyms** GDF9B

Function May be involved in follicular development. Oocyte-specific growth/differentiation factor that stimulates folliculogenesis and granulosa cell (GC) growth.

Cellular Location

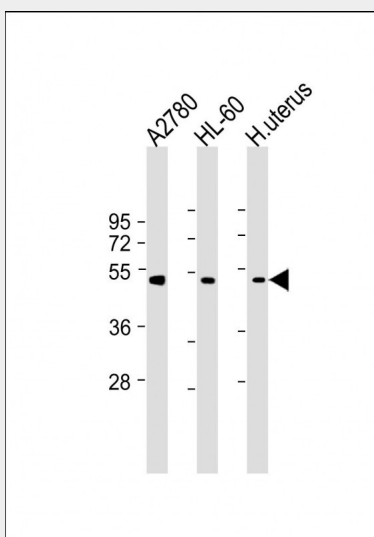
Secreted.

BMP15 Antibody (Center) - Protocols

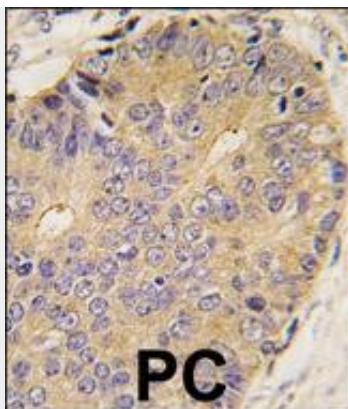
Provided below are standard protocols that you may find useful for product applications.

- [Western Blot](#)
- [Blocking Peptides](#)
- [Dot Blot](#)
- [Immunohistochemistry](#)
- [Immunofluorescence](#)
- [Immunoprecipitation](#)
- [Flow Cytometry](#)
- [Cell Culture](#)

BMP15 Antibody (Center) - Images



All lanes : Anti-BMP15 Antibody (Center) at 1:2000 dilution Lane 1: A2780 whole cell lysate Lane 2: HL-60 whole cell lysate Lane 3: Human uterus lysate Lysates/proteins at 20 µg per lane. Secondary Goat Anti-Rabbit IgG, (H+L), Peroxidase conjugated at 1/10000 dilution. Predicted band size : 45 kDa Blocking/Dilution buffer: 5% NFDM/TBST.



Formalin-fixed and paraffin-embedded human prostata carcinoma tissue reacted with BMP15 antibody (Center) (Cat.#AP1711c), which was peroxidase-conjugated to the secondary antibody, followed by DAB staining. This data demonstrates the use of this antibody for immunohistochemistry; clinical relevance has not been evaluated.

BMP15 Antibody (Center) - Background

Bmp15 is a member of the bone morphogenetic protein family which is part of the transforming growth factor-beta superfamily. The transforming growth factor-beta superfamily includes large families of growth and differentiation factors. It is thought that Bmp15 may be involved in oocyte maturation and follicular development as a homodimer or by forming heterodimers with a related protein, Gdf9.

BMP15 Antibody (Center) - References

- Liao, W.X., et al., J. Biol. Chem. 278(6):3713-3719 (2003).
- Moore, R.K., et al., J. Biol. Chem. 278(1):304-310 (2003).
- Galloway, S.M., et al., Nat. Genet. 25(3):279-283 (2000).
- Aaltonen, J., et al., J. Clin. Endocrinol. Metab. 84(8):2744-2750 (1999).
- Dube, J.L., et al., Mol. Endocrinol. 12(12):1809-1817 (1998).